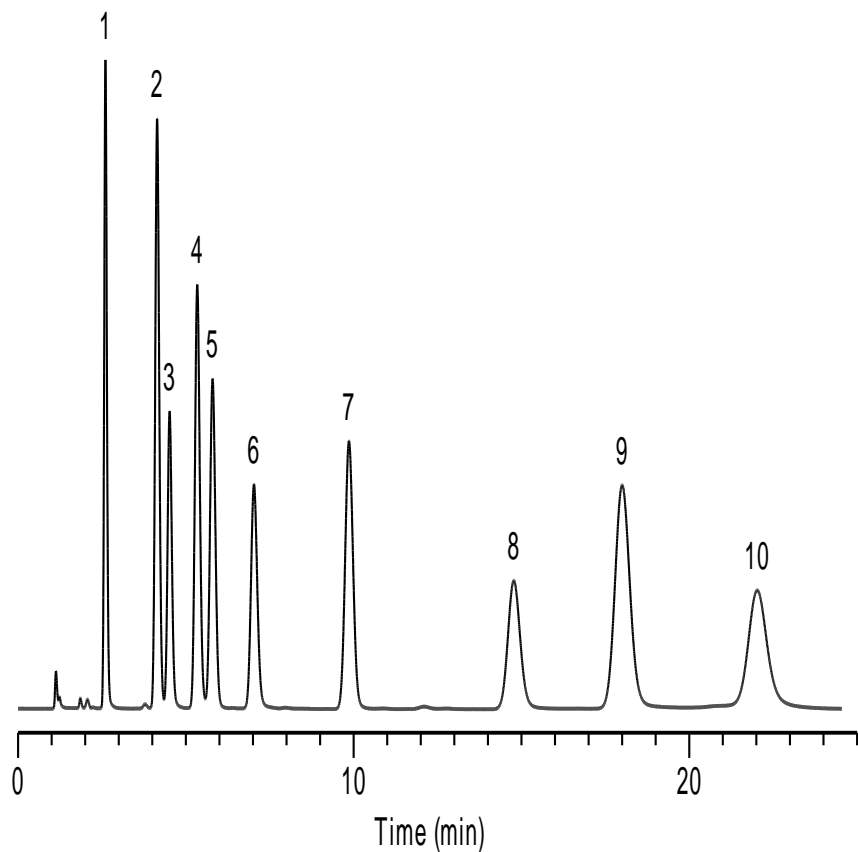


Antibacterials

- Columns: Listed on chromatograms
- Dimensions: 150×4.6mm 5μm(all columns)
- Mobile Phase: ACN+0.1% HCOOH: H₂O+0.1% HCOOH=20:80
- Flow Rate: 1.0ml/min
- Temperature: Ambient
- Detector: UV 254nm
- Sample:
1. Sulfanilamide
 2. Carbadox
 3. Sulfapyridine
 4. Sulfamerazine
 5. Thiamphenicol
 6. Sulfamethoxy pyridazine
 7. Furazolidone
 8. Sulfamethoxazole
 9. Sulfisoxazole
 10. Oxolinic acid

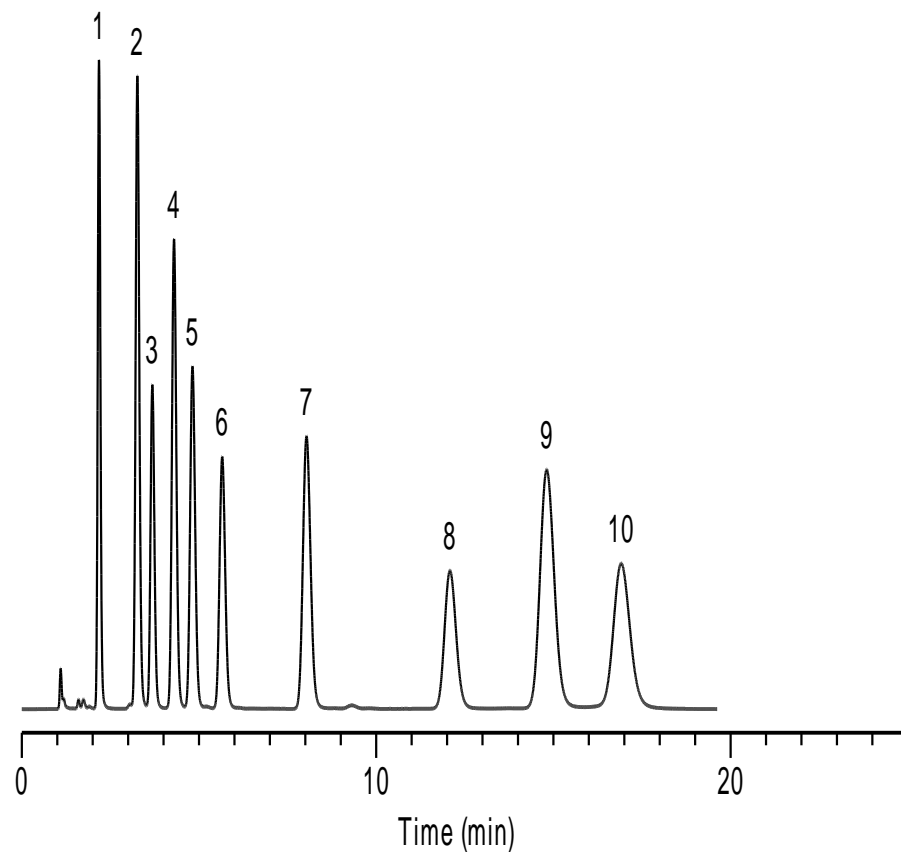
*ZORBAX,HC,TC,Eclipse,Hypersil are registered trademarks of Agilent Technologies.Gemini,Luna are registered trademarks of Phenomenex.Symmetry,XBridge are registered trademarks of Waters Corporation. Inertsil is registered trademark of GL Sciences Inc.Kromasil is registered trademark of Eka Chemicals.BECKMAN Coulter is registered trademark of Beckman Coulter, Inc. SMT is registered trademark of Analytich Inc.Dikma Technologies is not affiliated with the above companies.

Diamonsil C18



[China](#)

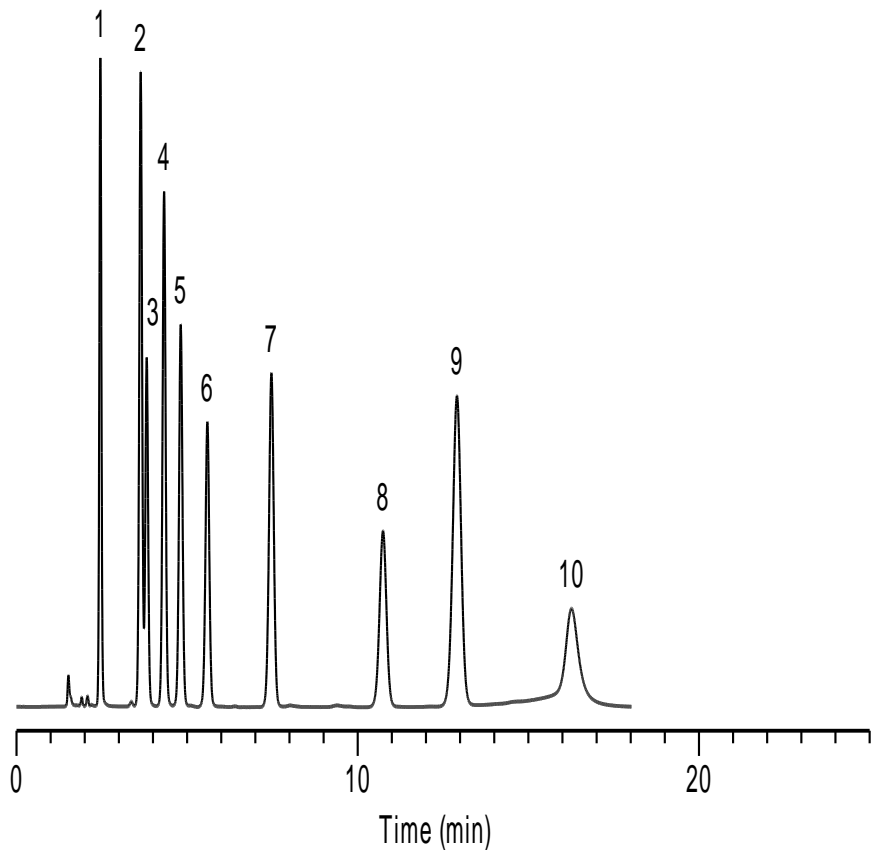
Inspire



[Canada](#)

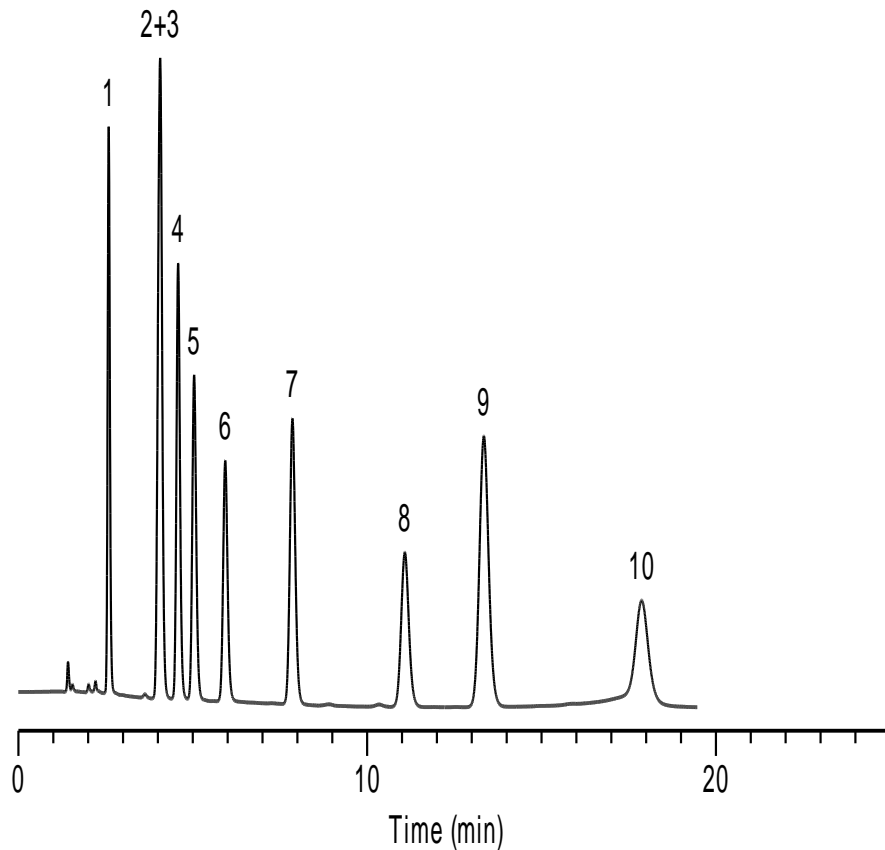
[US](#)

***Agilent HC-C18**



[China](#)

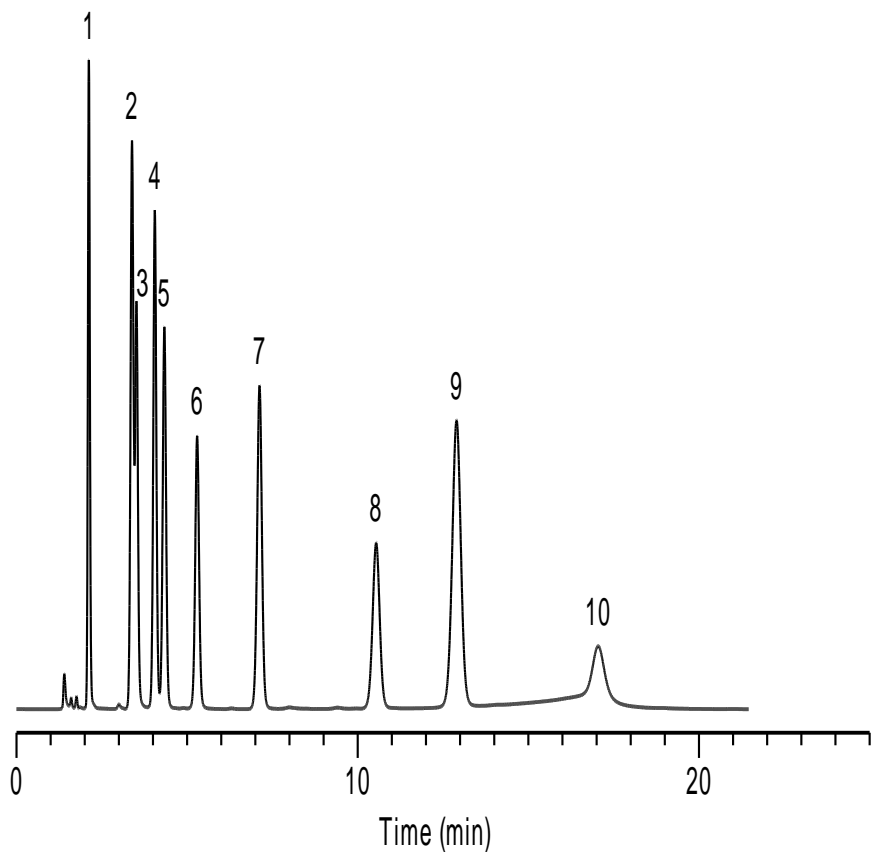
***Agilent TC-C18**



[Canada](#)

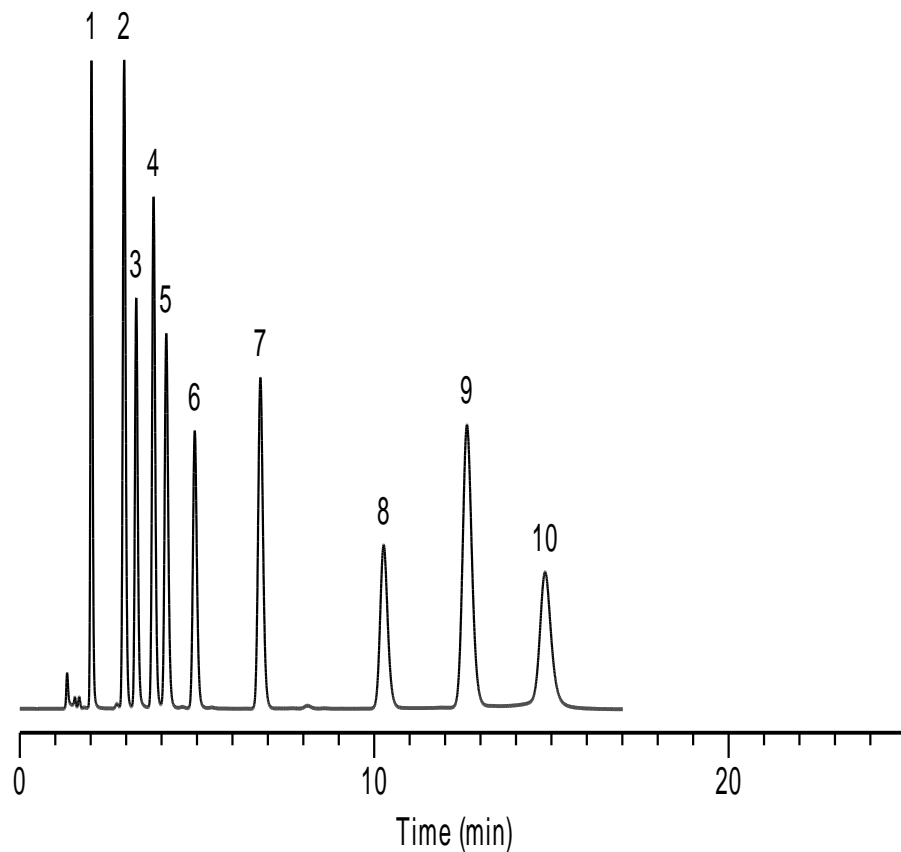
[US](#)

***Agilent Zorbax SB-C18**



[China](#)

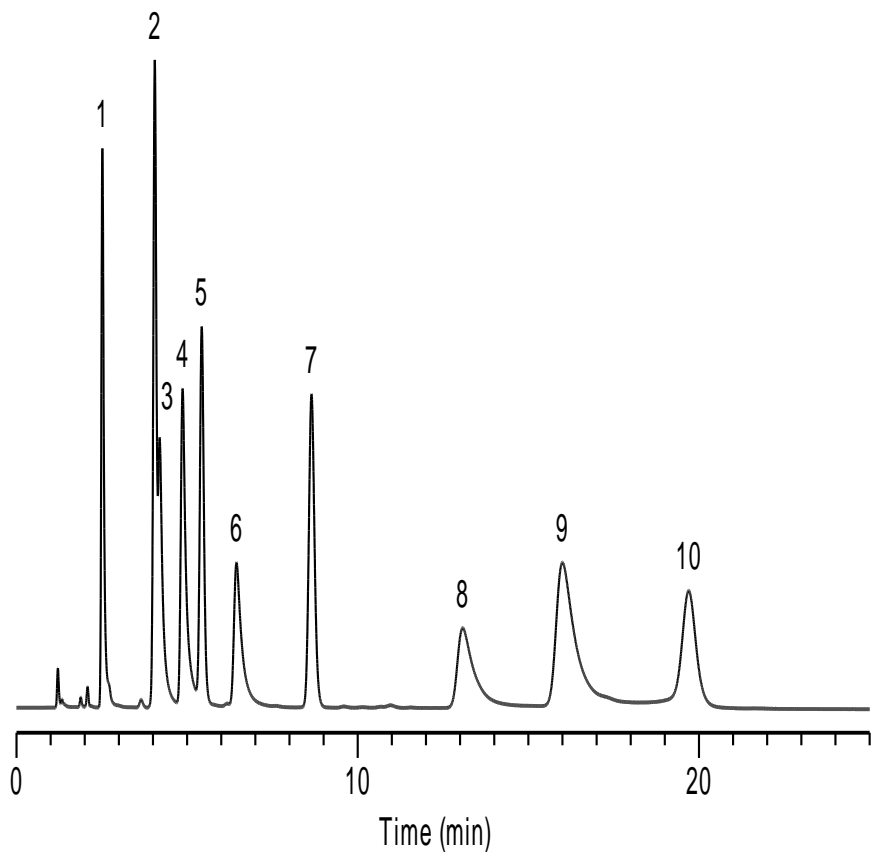
***Agilent Eclipse XDB-C18**



[Canada](#)

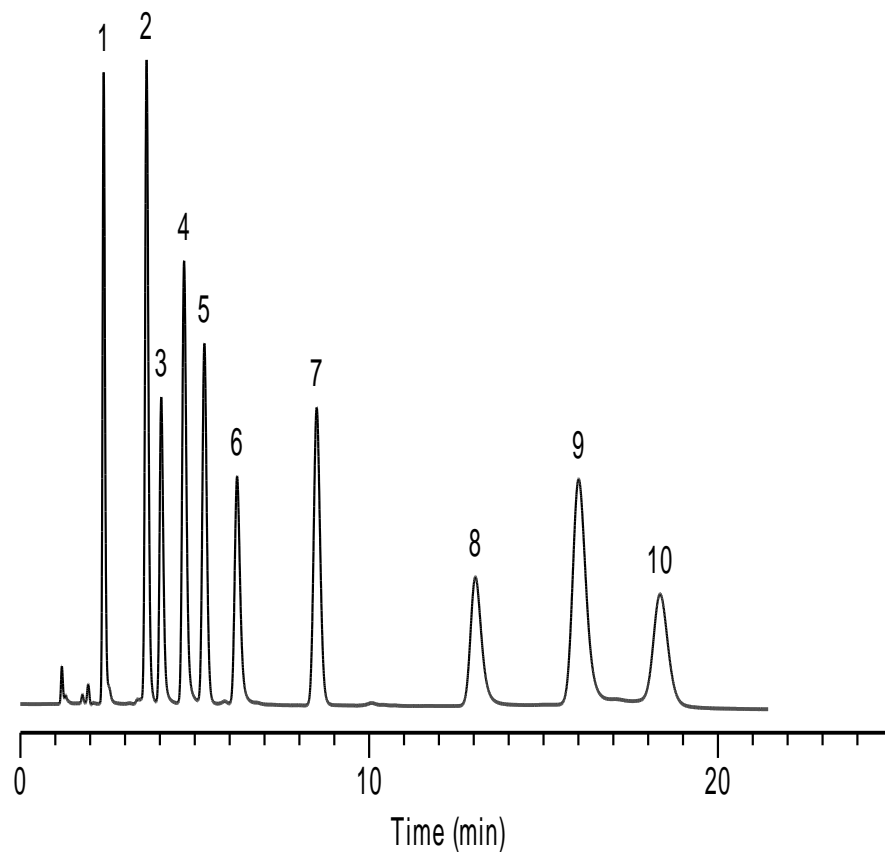
[US](#)

***Phenomenex Gemini-C18**



[China](#)

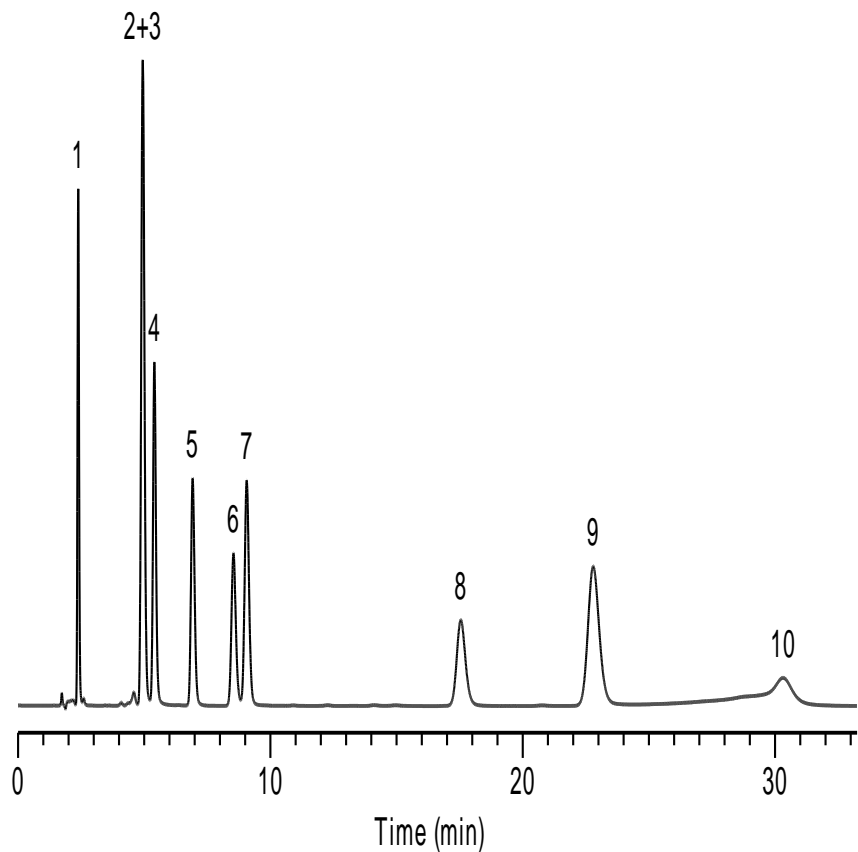
***Phenomenex Luna-C18(2)**



[Canada](#)

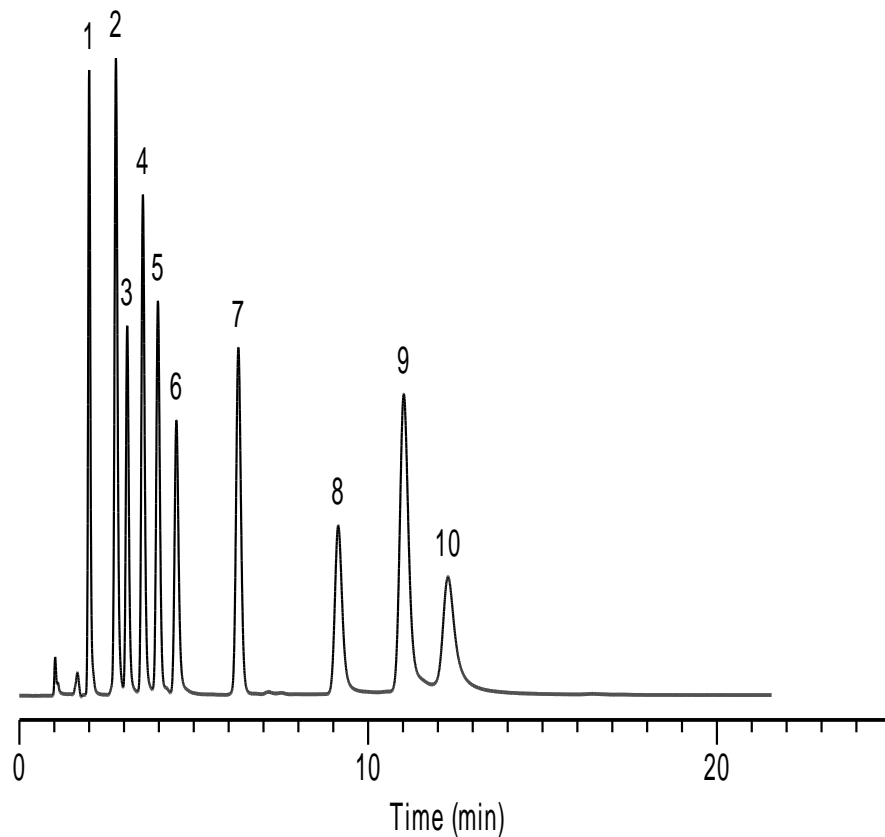
[US](#)

***Waters Xbridge-C18**



[China](#)

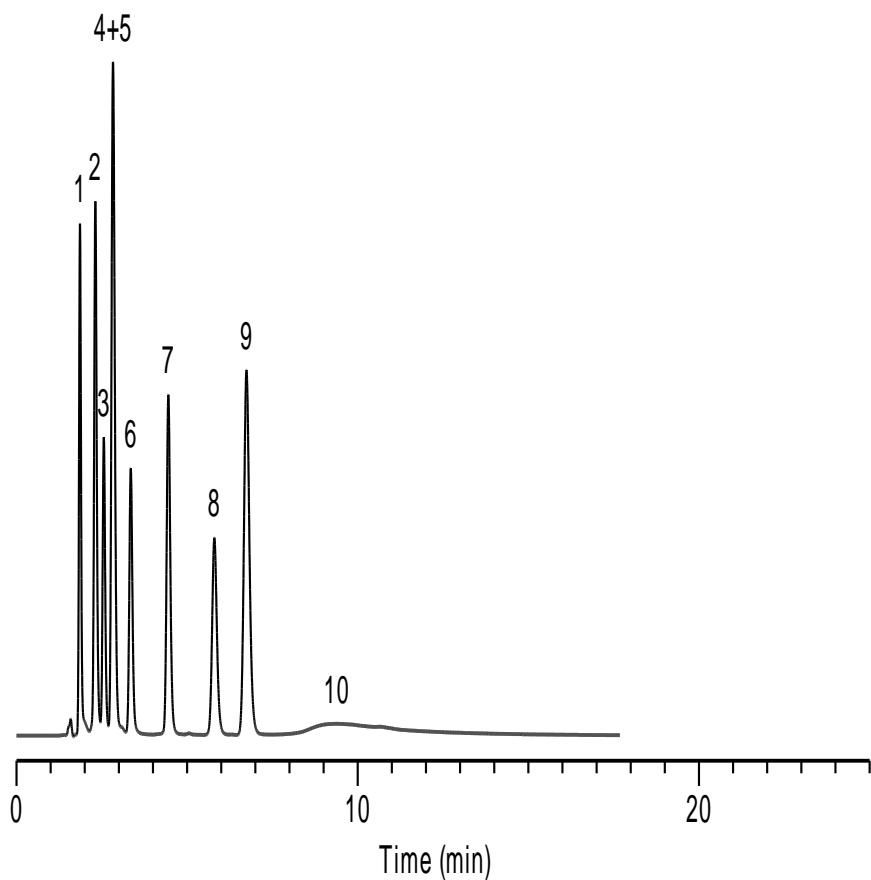
***Waters Symmetry-C18**



[Canada](#)

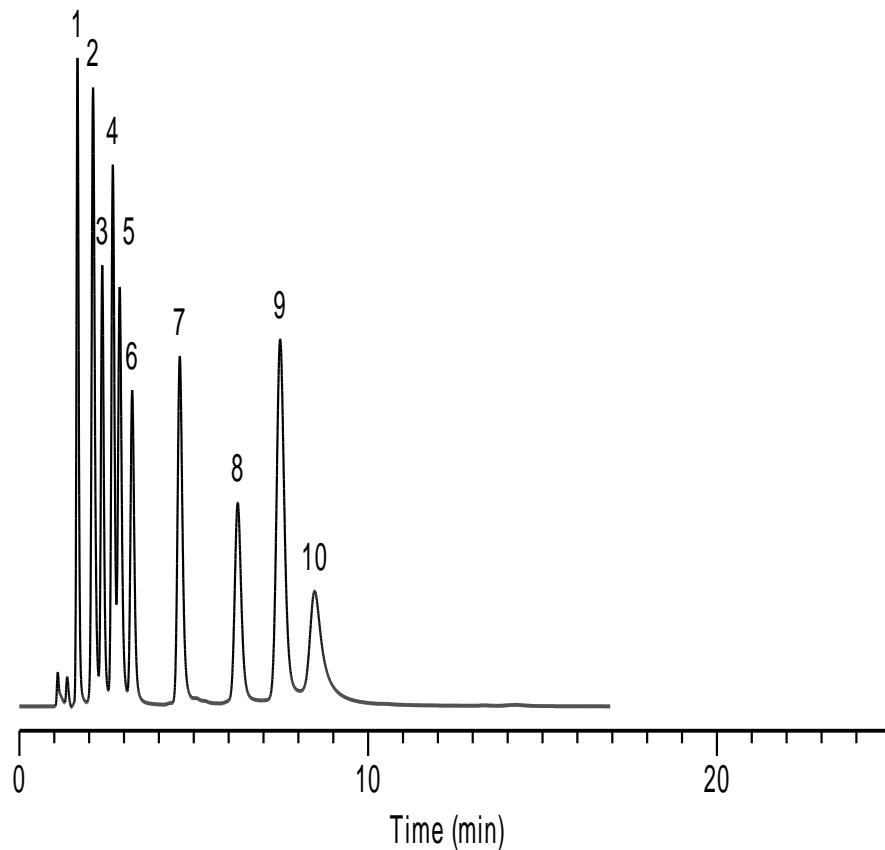
[US](#)

***BECKMAN Coulter-C18**



[China](#)

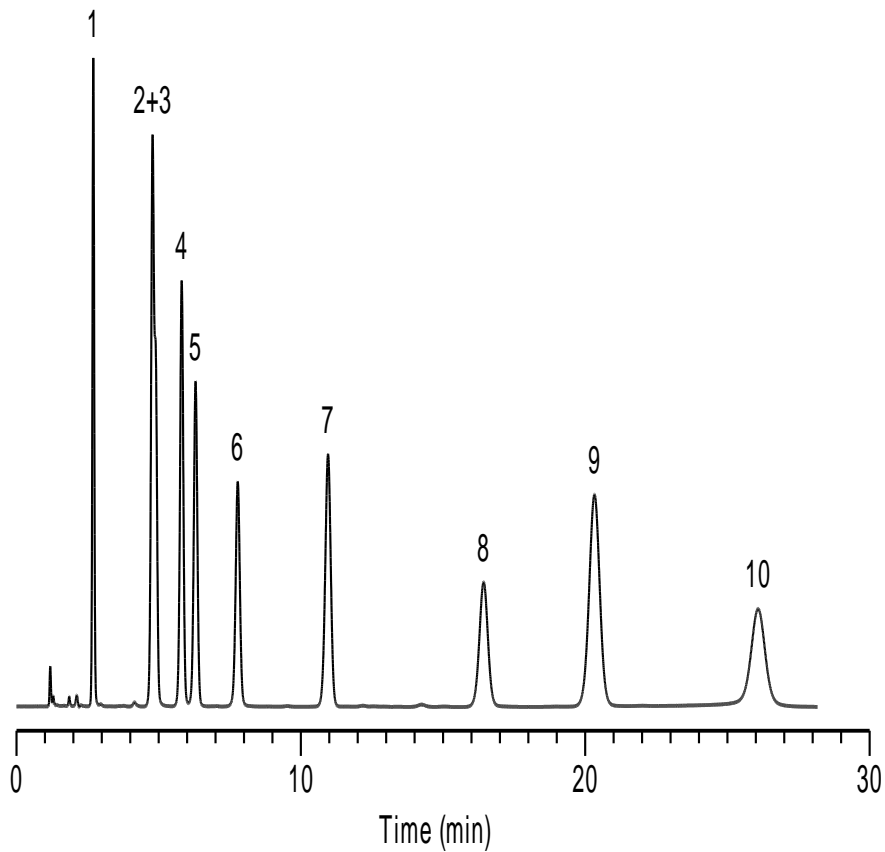
***SMT-C18**



[Canada](#)

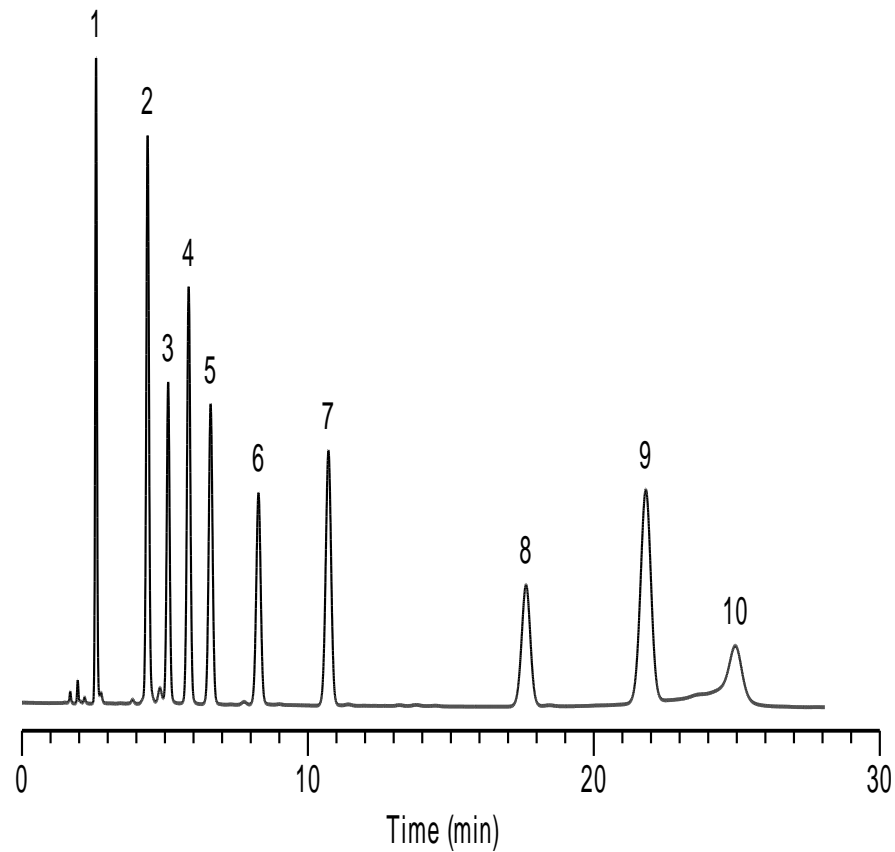
[US](#)

Platisil C18



[China](#)

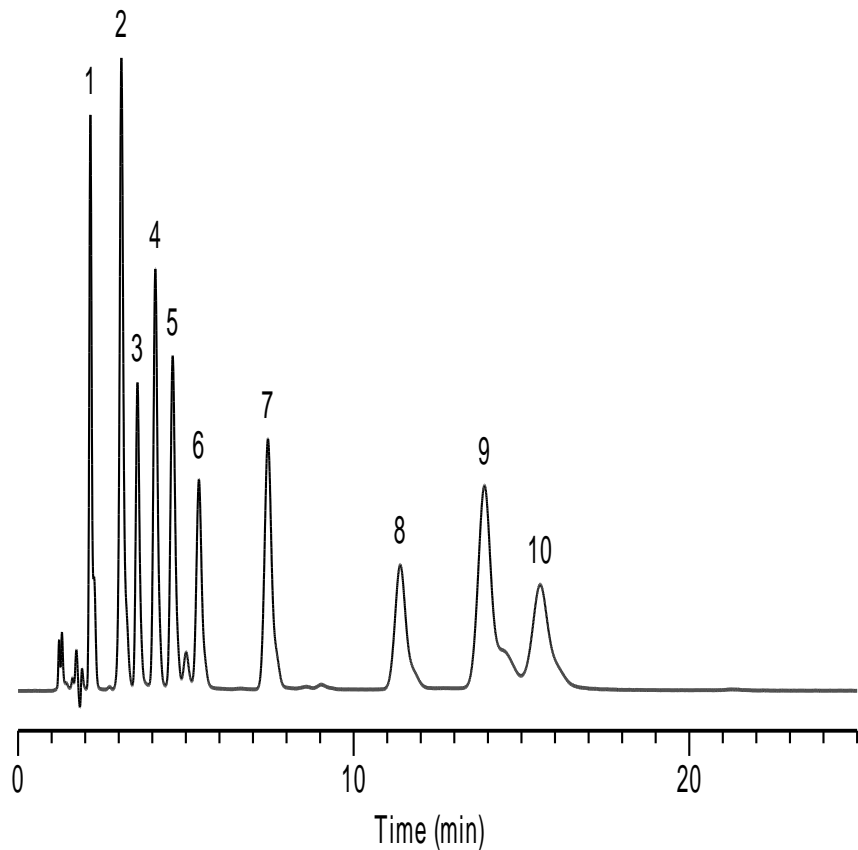
Platisil C18(2)



[Canada](#)

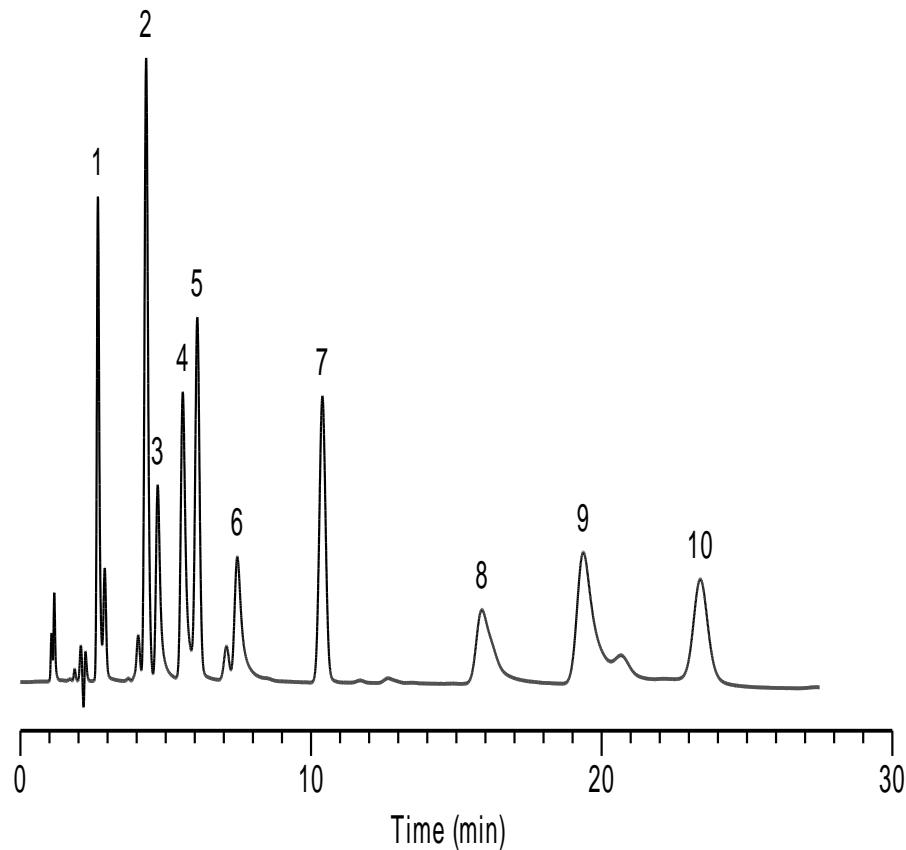
[US](#)

***Kromasil**



[China](#)

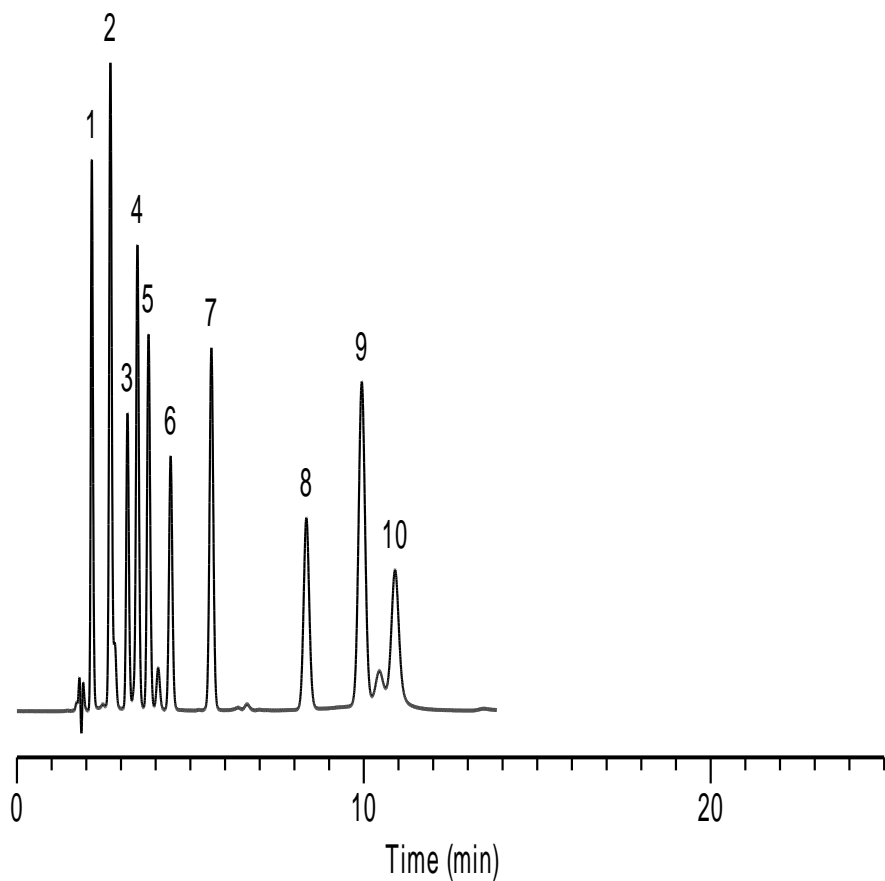
***Inertsil ODS-3**



[Canada](#)

[US](#)

*Hypersil BDS-C18



Column	R(3,2)	R(5,4)
Diamonsil C18	1.64	1.62
Inspire	2.16	2.14
*Agilent HC-C18	1.16	2.78
*Agilent TC-C18	coelute	2.38
*Agilent Zorbax SB-C18	0.75	1.61
*Agilent Eclipse XDB-C18	2.35	2.09
*Phenomenex Gemini-C18	0.72	2.47
*Phenomenex Luna-C18(2)	2.30	2.63
*Waters Xbridge-C18	coelute	6.52
*Waters Symmetry-C18	2.09	2.40
*BECKMAN Coulter-C18	1.79	coelute
*SMT-C18	1.64	1.09
Platisil C18	coelute	2.23
Platisil C18(2)	3.89	3.32
*Kromasil	2.38	2.14
*Inertsil ODS-3	1.66	1.75
*Hypersil BDS-C18	3.44	2.00